

NOZZLE ASSEMBLY

1. Mignon kit content compatible with Tenco machines

The nozzle is supplied complete with a set of bushings with nuts, screws and tubes (see images).

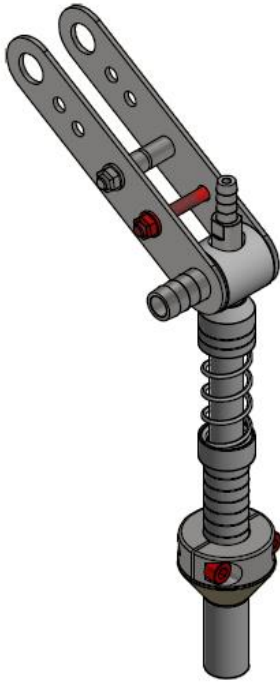


Figure 1 Nozzle

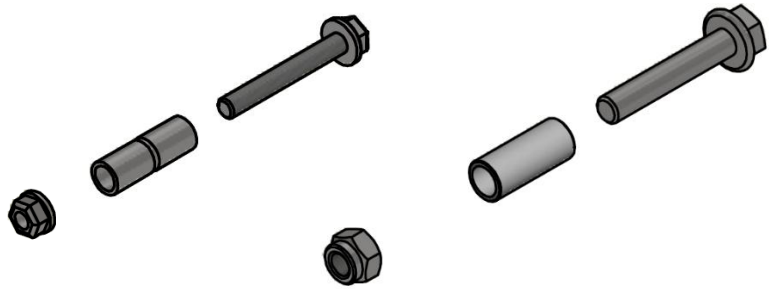


Figure 2 Set of screws, bushings

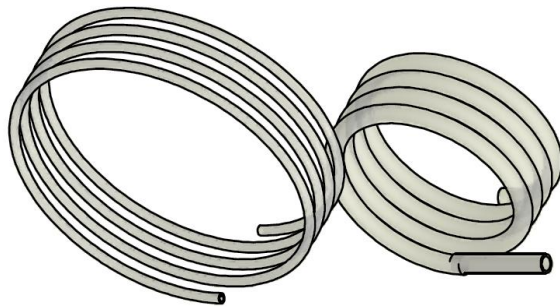
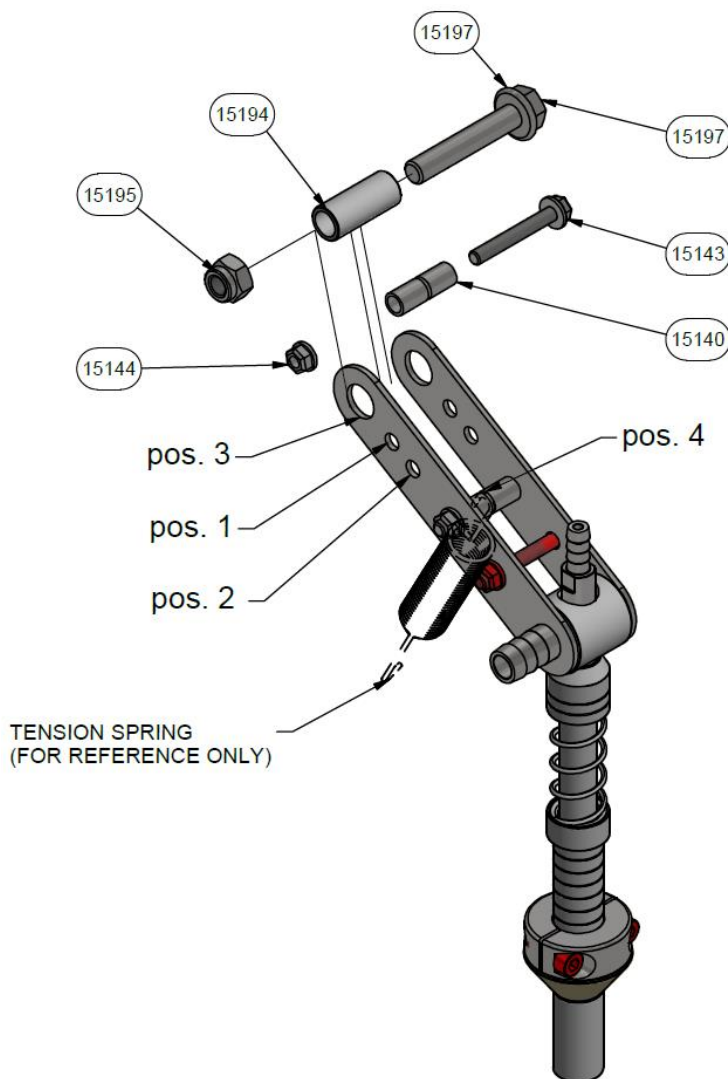
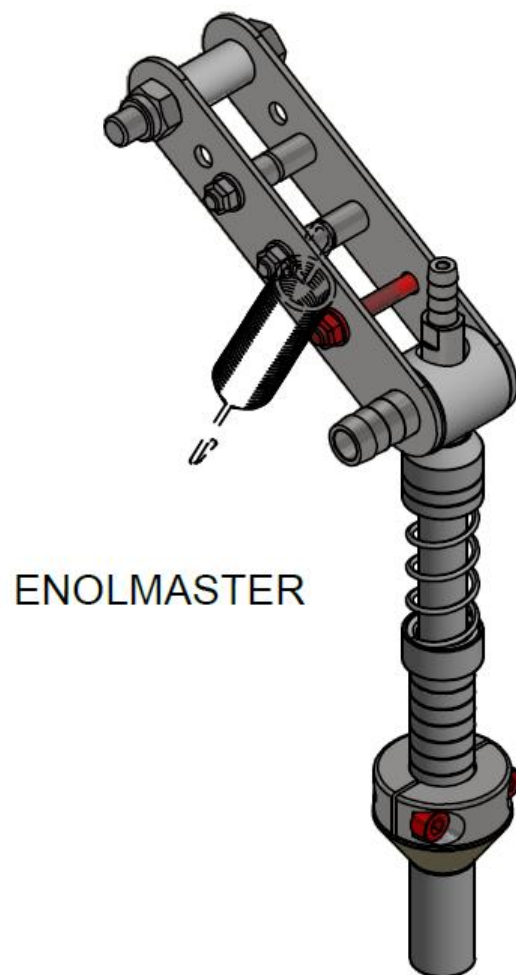
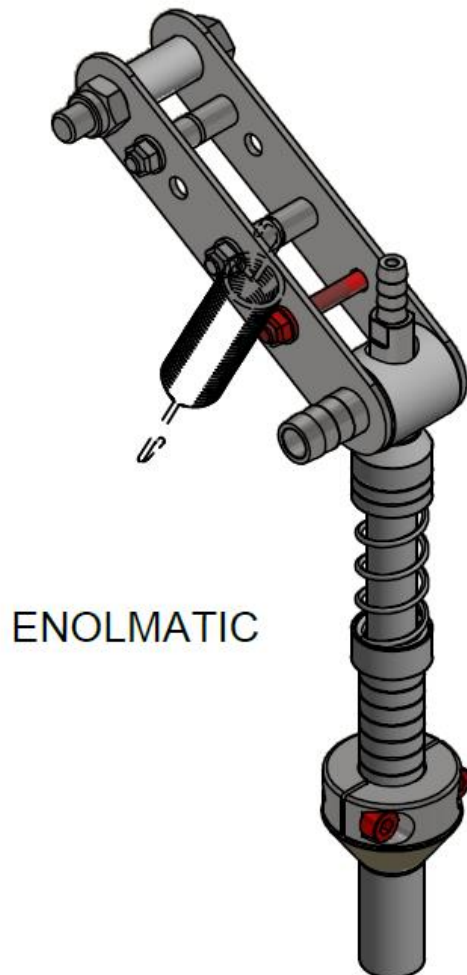


Figure 3 Pipes

2. Assembly



	Enolmatic	Enolmaster
1) Removing the nozzle to be replaced:	Disconnect the pipes connected to the nozzle, loosen the screw located in the center of the brackets, move the two brackets away by removing the nozzle from the tubular.	Disconnect the pipes connected to the nozzle, unscrew self-locking nut and fixing screw, then remove them (including stop bush).
2) Preparation of the new mignon nozzle:	Align bushing 15140 with hole in position 1, then insert screw 15143 and tighten with nut 15144.	Align bushing 15140 with hole in position 2, then insert screw 15143 and tighten with nut 15144.
3) The nozzle is ready to be mounted on your machine:	Align the holes in position 3 with the holes on the tubular while keeping the latter inside them, insert the bushing 15194 through the holes in position 3, insert the screw 15197 and tighten with the nut 15195.	Align the holes in position 3 with the holes on the fixing brackets on the machine, insert the bushing 15194 through the holes in position 3, insert the screw 15197 and tighten with the nut 15195.



4) Mount your spring by fixing it on the mignon nozzle, in particular on the bushing in position 4, and on the other in the appropriate seat of your machine. Finally, connect your tubes to the nozzle, checking that there are no leaks during bottling. If necessary, replace your pipes with those supplied with the nozzle.