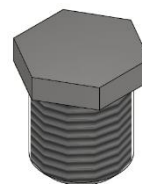
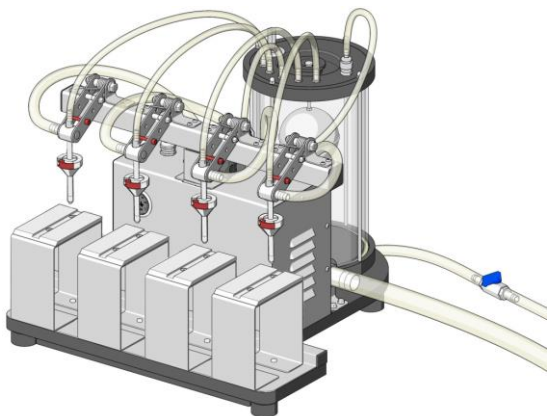


ADDENDUM

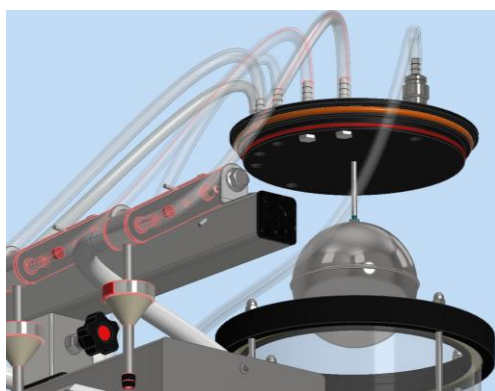
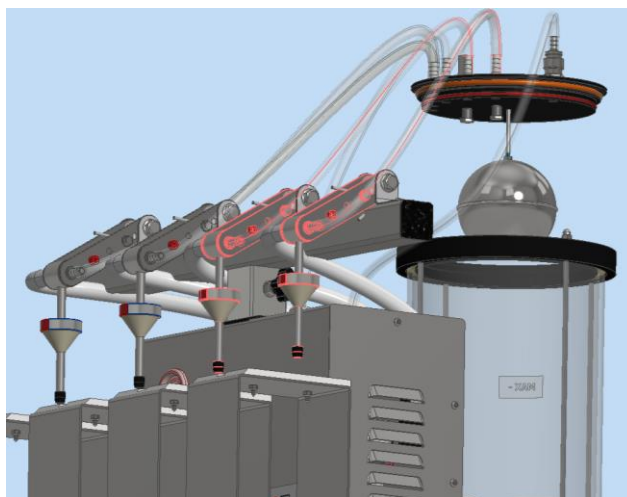
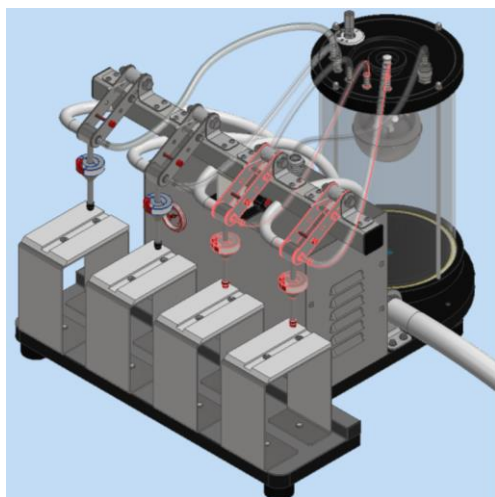
In the case of a Mignon 4 nozzles machine and the user should not use all spouts, it is advisable to plug the suction holes inside the tank using the stainless steel caps supplied. This allows to increase the performance of the machine and have a higher filling speed.



stainless steel cap

Mounting example: Suppose the user wanted to use only two nozzles.

- 1) Follow the pipes from the nozzles (which you do not want to use) to the hose holders on the tank;
- 2) Lift the removable tank cap and locate the hole on which the hose adaptor is screwed;
- 3) On the inside of the cap of the tank and at the hole of the hose holder located screw the stainless steel cap (see pictures below).



You can plug up to three nozzles and work at maximum efficiency with one nozzle.

To remove the caps just repeat the procedure described above by removing the caps.

